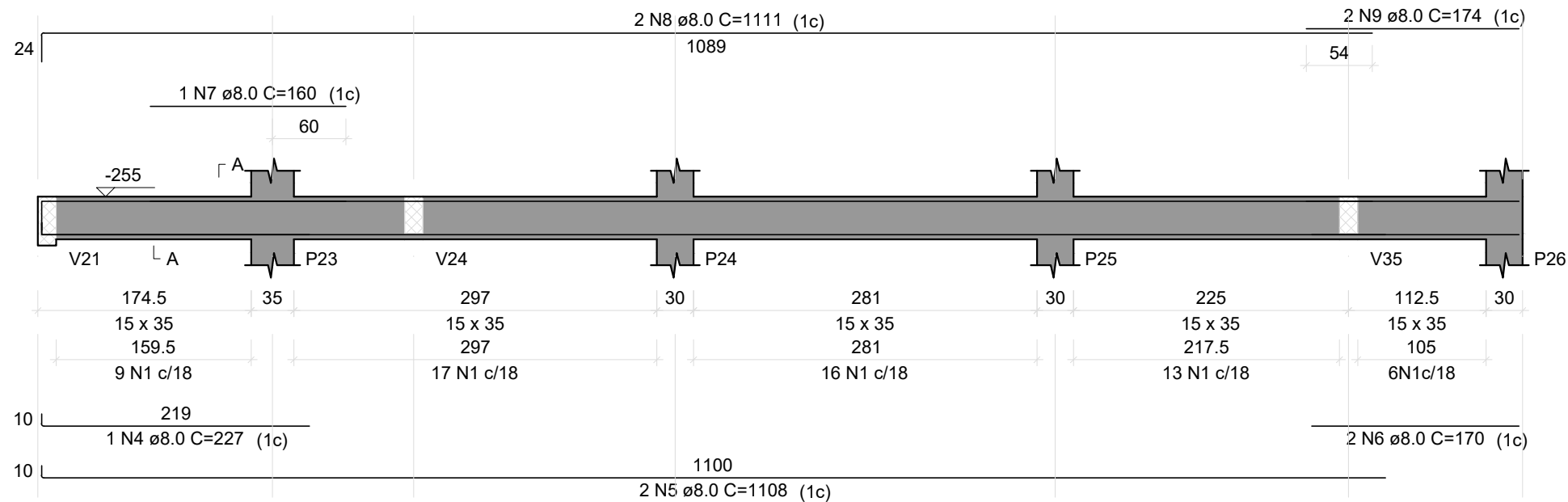


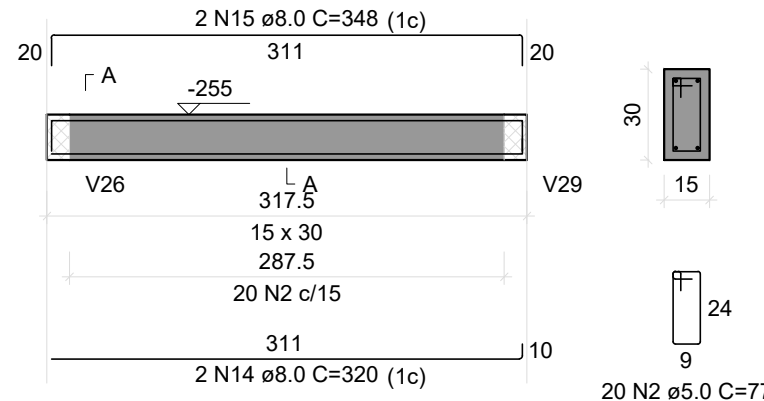
V7

ESC 1:50



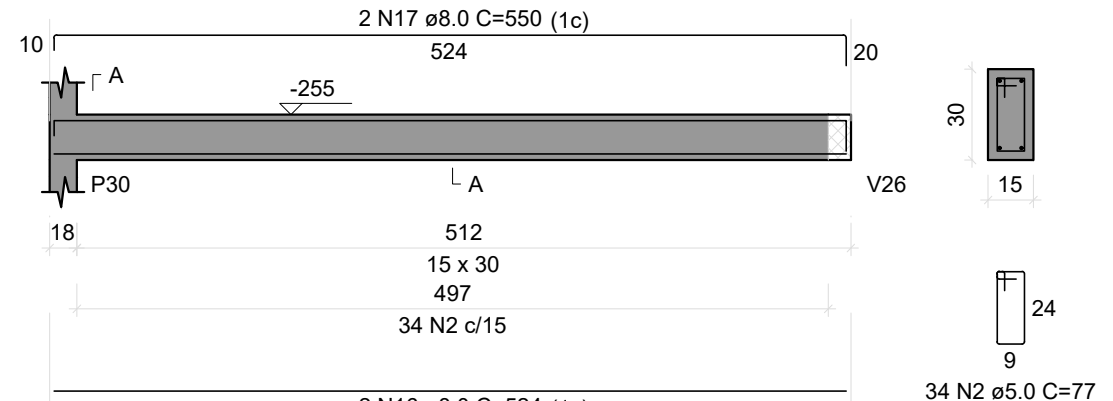
V11

ESC 1:50



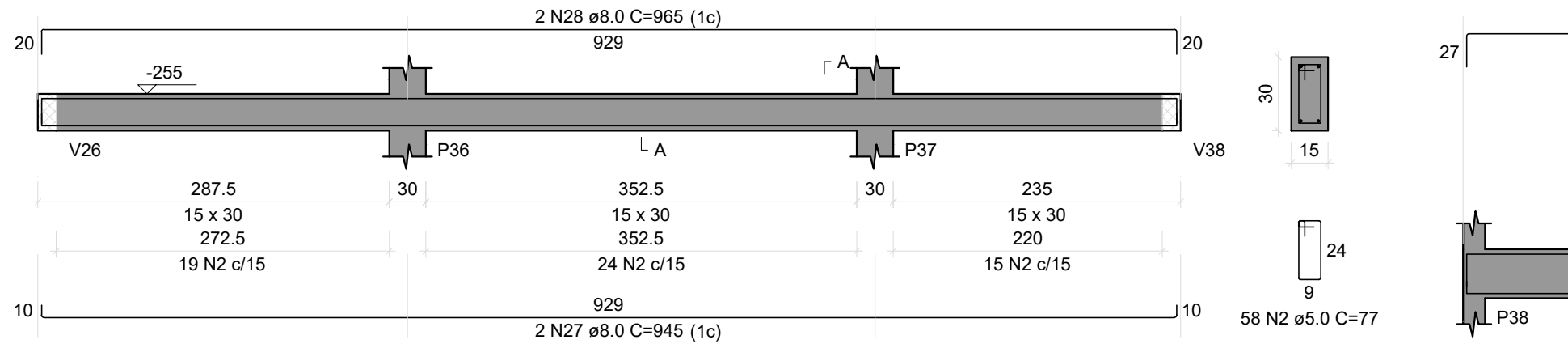
V12

ESC 1:50



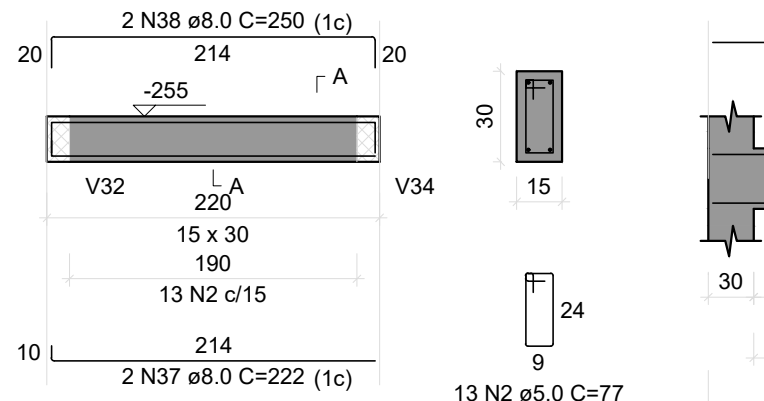
V15

ESC 1:50



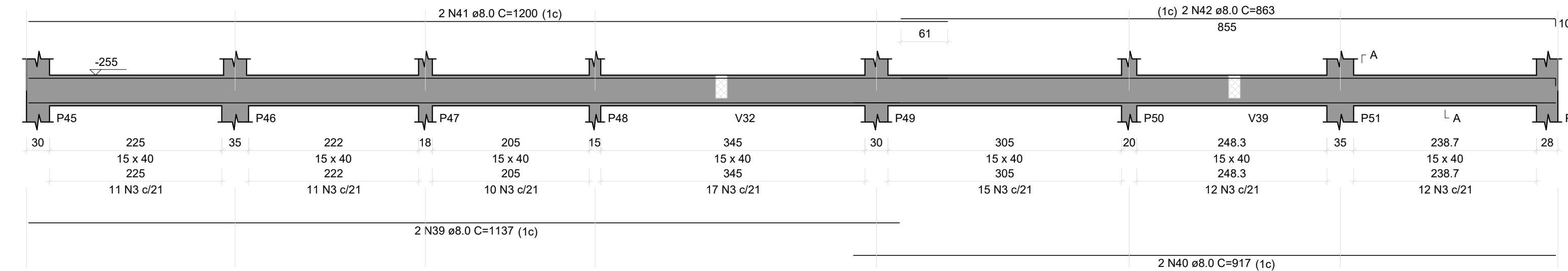
V17

ESC 1:50



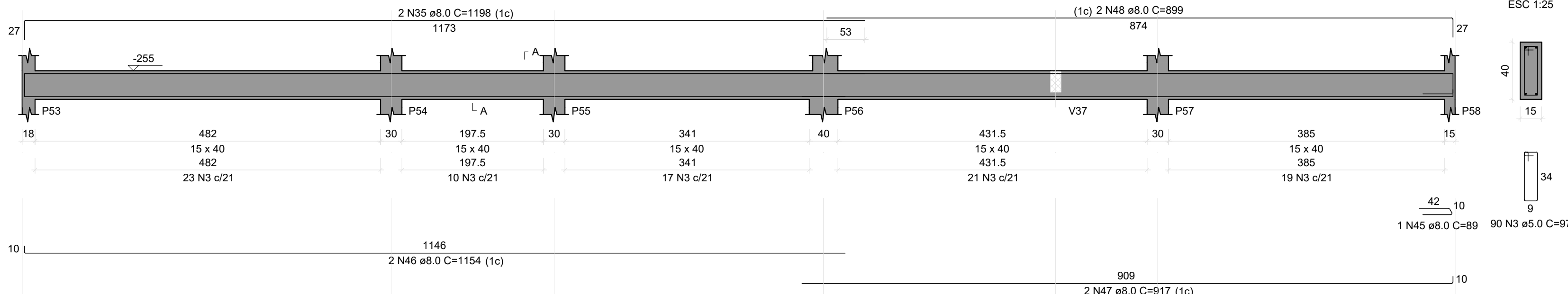
V18

ESC 1:50



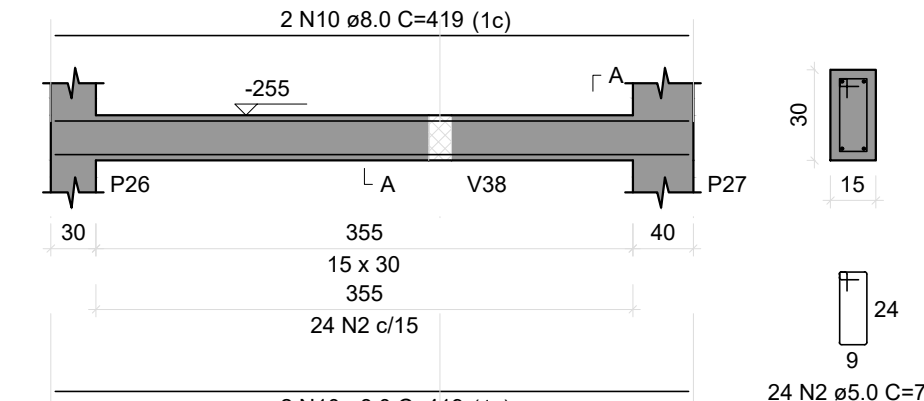
V20

ESC 1:50



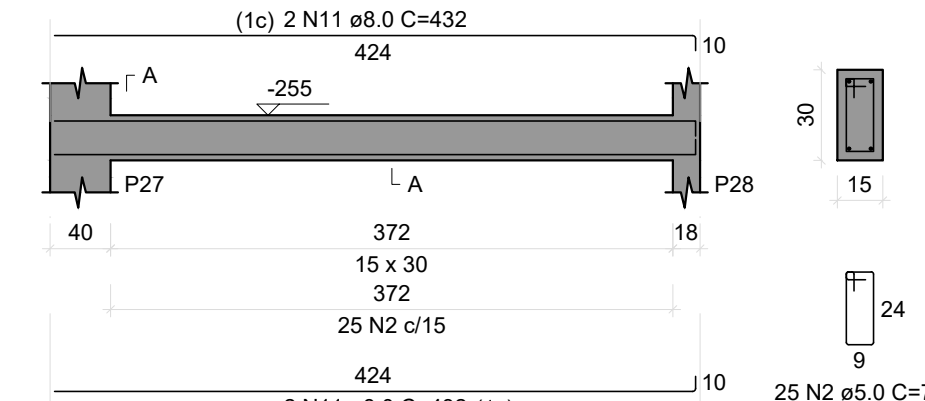
V8

ESC 1:50



V9

ESC 1:50



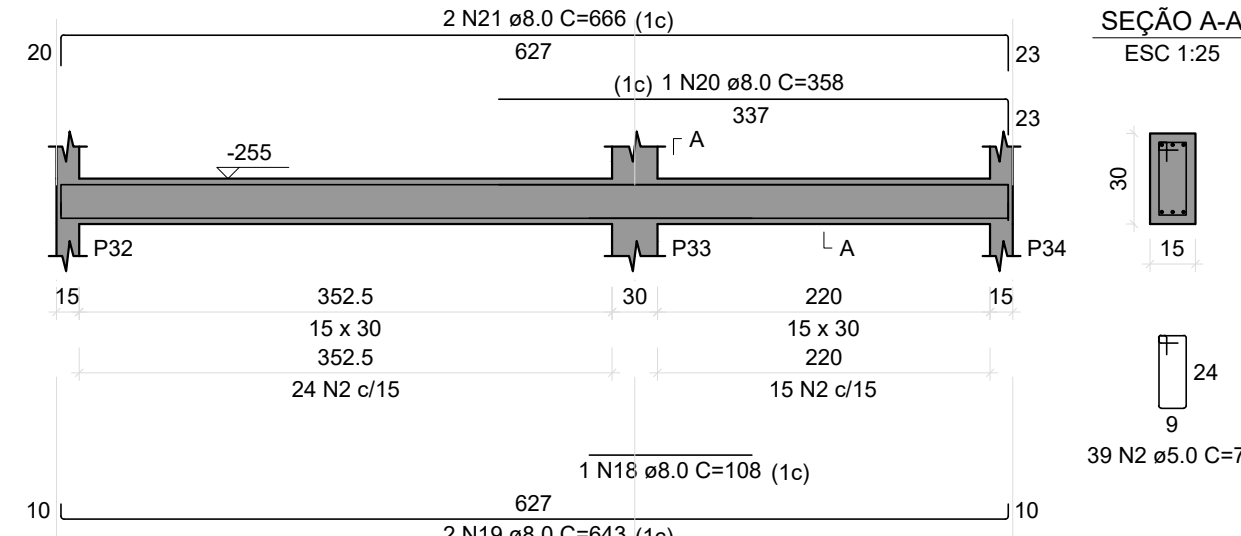
V10

ESC 1:50



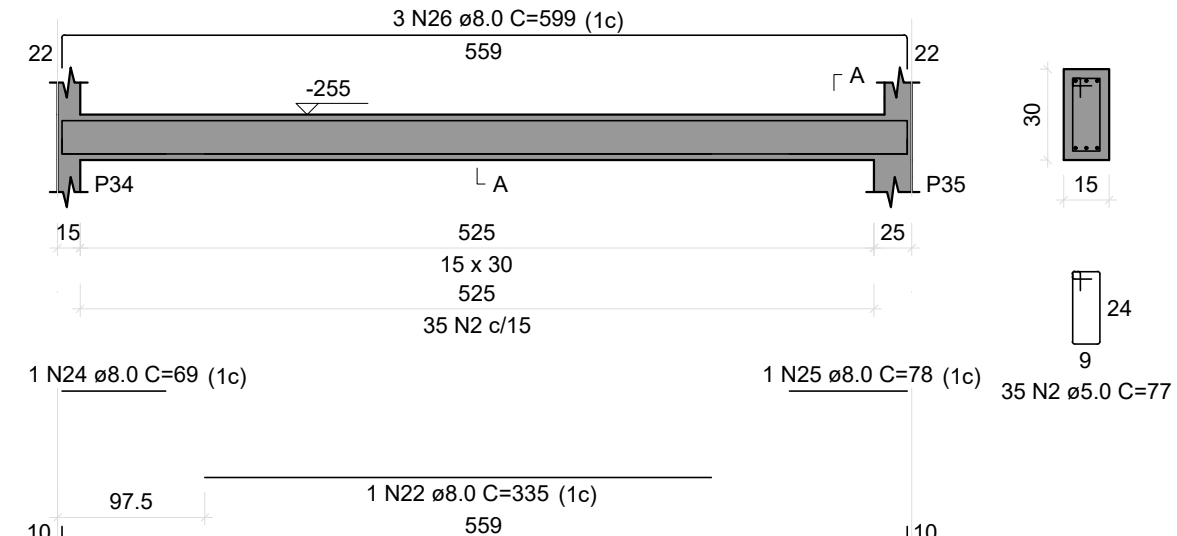
V13

ESC 1:50



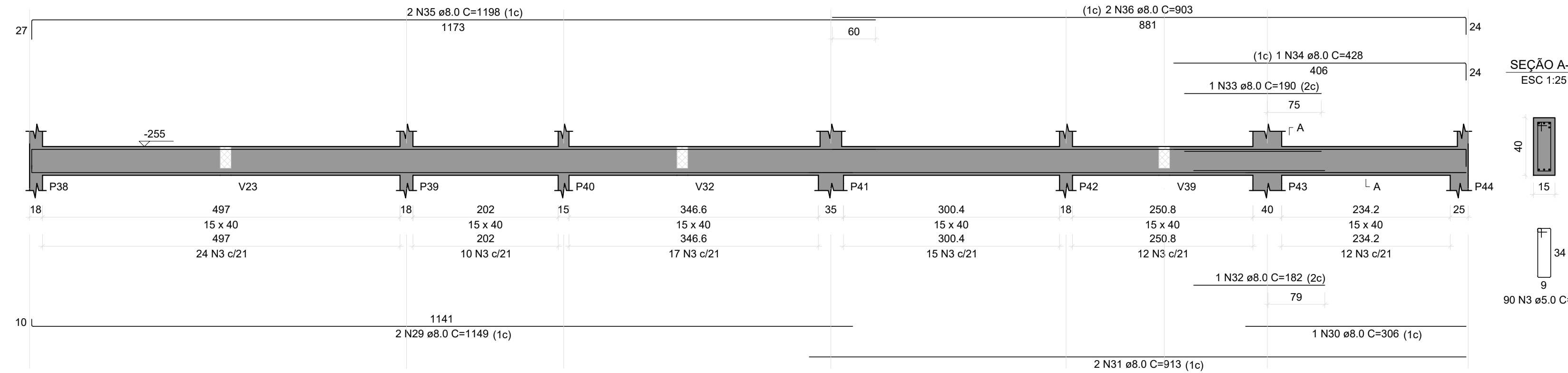
V14

ESC 1:50



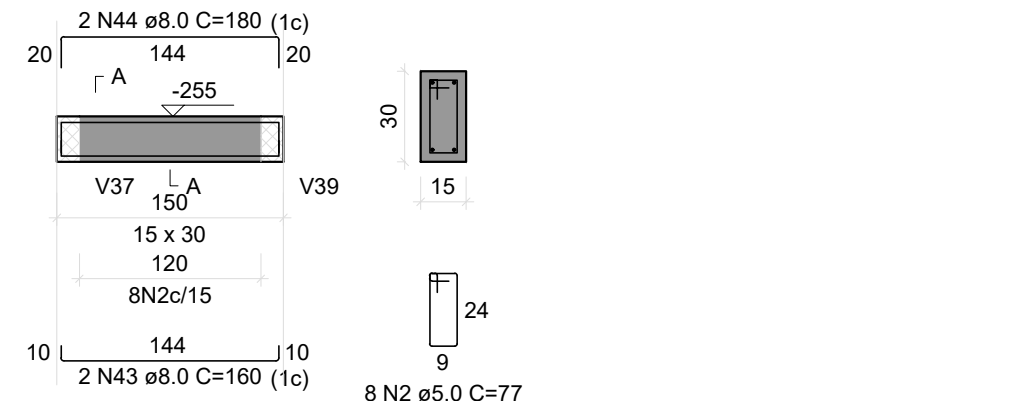
V16

ESC 1:50



V19

ESC 1:50



RELAÇÃO DO AÇO

AÇO	N	DIAM (mm)	QUANT	C.UNIT (cm)	C.TOTAL (cm)
V7	1	5.0	61	87	5307
V10	2	5.0	263	77	20251
V13	3	5.0	268	97	25966
V16	4	8.0	1	227	227
V19	5	8.0	2	1108	2216
	6	8.0	2	170	340
	7	8.0	1	160	160
	8	8.0	2	1111	2222
	9	8.0	2	174	348
	10	8.0	4	419	1676
	11	8.0	4	432	1728
	12	8.0	2	152	304
	13	8.0	2	162	324
	14	8.0	2	320	640
	15	8.0	2	348	696
	16	8.0	2	524	1048
	17	8.0	2	550	1100
	18	8.0	1	108	108
	19	8.0	2	643	1286
	20	8.0	1	358	358
	21	8.0	2	666	1332
	22	8.0	1	335	335
	23	8.0	2	575	1150
	24	8.0	1	69	69
	25	8.0	1	78	78
	26	8.0	3	599	1797
	27	8.0	2	945	1890
	28	8.0	2	965	1930
	29	8.0	2	1149	2298
	30	8.0	1	306	306
	31	8.0	2	913	1826
	32	8.0	1	182	182
	33	8.0	1	190	190
	34	8.0	1	428	428
	35	8.0	4	1198	4792
	36	8.0	2	903	1806
	37	8.0	2	222	444
	38	8.0	2	250	500
	39	8.0	2	1137	2274
	40	8.0	2	917	1834
	41	8.0	2	1200	2400
	42	8.0	2	863	1726
	43	8.0	2	160	320
	44	8.0	2	180	360
	45	8.0	1	89	89
	46	8.0	2	1154	2308
	47	8.0	2	917	1834
	48	8.0	2	899	1798

RESUMO DO AÇO


AÇO	DIAM (mm)	C.TOTAL (m)	PESO + 10% (kg)
CA50	8.0	510.8	221.7
CA60	5.0	515.5	87.4
PESO TOTAL (kg)		221.7	87.4

Volume de concreto (C-25) = 5.61 m³

Área de forma = 90.57 m²

BLOCO DA DELEGACIA PRANCHAS DE: 296 a 348

REVISÃO	DESCRIÇÃO	REVISADO POR	DATA
REVISÃO 00	EMIÇÃO INICIAL	WAGNER	MARÇO/2024

SECRETARIA DE ESTADO DA SEGURANÇA PÚBLICA			DIRETORIA DE ARQUITETURA E EDIFICAÇÕES PRAÇA TOBIAS BARRETO, nº 20, BARRIO SÃO JOSÉ CEP: 49050-220 ARACAJU/SE TELS: (79)3216-5454 / (79)98851-9337
TIPO PROJETO ESTRUCTURAL EXECUTIVO DA CONSTRUÇÃO DO CENTRO INTEGRADO DE SEGURANÇA PÚBLICA (CISP) EM NOSSA SENHORA DA GLÓRIA/SE			Nº DA PRANCHA
ASSUNTO: BLOCO DA DELEGACIA VIGAS BALDRAME 01			302/348
END.: RUA ANTÔNIO JOAQUIM DE FARIAS, S/N – N. SRA DA GLÓRIA – SE			
AUTOR DO PROJETO: WAGNER DARY DA SILVA			
RESPONSÁVEL TÉCNICO: WAGNER DARY DA SULVA RN: 270771497-6			
ESCALA: INDICADO	DATA: MARÇO/2024	DESENHISTA: WAGNER DARY DA SILVA	